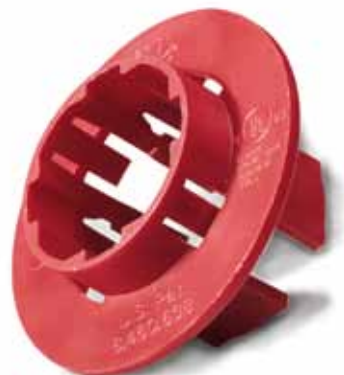
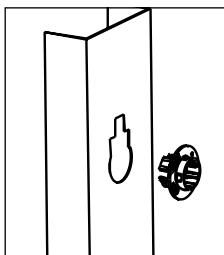


## Stud Insulators

One piece design insulating 360° protection for cable runs through metal studs.

- Fits all pre-punched and field punched hole sizes and configurations.
- Unique folding tabs for fast, one-handed installations.
- Meets NEC article 300-4(b) and CEC rule 12-516.

Part #	Pkg Qty	Description
SI-25	25/bag	Metal Stud Insulators



Patented

SEE PG  
113



FOR MORE INFO ON  
Stud Punch

## Grommets

Protect wires from chafing against drilled holes.

Part #	Pkg Qty	Inside Dimensions
GHG-1525	6/card	1/4"
GHG-1538	5/card	3/8"
GHG-1550	4/card	1/2"
GHG-1575	3/card	3/4"
GHG-AST	8/clam	1/4", 3/8", 1/2", 3/4"



## Knockout Seals (1/2" to 4")

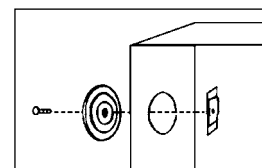
Easy-to-use metal knockout seal.

- Fast and easy to install from inside or outside of box.
- Embossed for quick self-centering in unused knockouts. One screw holds seal in place.
- Made of rust-proofed, cold-rolled galvanized steel. Screw and bar are zinc-plated.
- Marked for size and catalog number for easy identification.
- 16-gauge steel; 3/8" thread.



Part #	Pkg Qty	For Knockout Dia
KO701	100/box	1/2"
KO701C	5/clam	1/2"
KO702	50/box	3/4"
KO702C	3/clam	3/4"
KO703	25/box	1"
KO704	25/box	1 1/4"

Part #	Pkg Qty	For Knockout Dia
KO705	10/box	1 1/2"
KO706	10/box	2"
KO707	10/box	2 1/2"
KO708	10/box	3"
KO709	10/box	3 1/2"
KO710	10/box	4"



SEE PG  
104



FOR MORE INFO ON  
Hydraulic Drivers  
& Pull Studs